

ARCO | S214

Francesco Rota | 2016



ARCO

Francesco Rota | 2016

If objects had their own life, we could say that ARCO is a chair that “embraces”. Thanks to its hidden screw system, the curved wood backrest is smoothly joined to the solid wood seat, with the design creating a continuous line that magically brings together each part. The support is exceptionally comfortable and the opening allows you to sit in a relaxing position in total freedom. Also available in the upholstered version, the ARCO chair “embraces” any environment, from the office to the home, from an elegant bar to a restaurant, with a contemporary atmosphere.

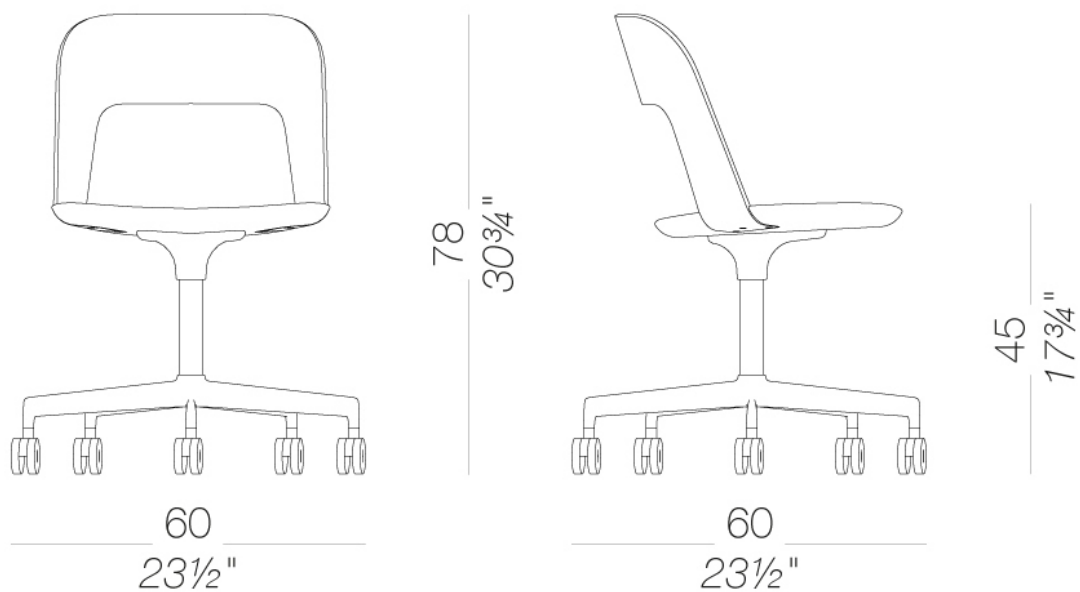


ARCO

Francesco Rota | 2016

| S214 Upholstered or in wood, on castors

Swivel chair with seat and backrest in curved plywood or completely upholstered in polyurethane fire retardant foam and covered with fabric or eco-leather. Base in sandblasted aluminium or powder coated and 5 self-braking castors.



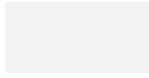
ARCO | S214

Francesco Rota | 2016

frame



powder coating
black
1 Colors



powder coating
white
1 Colors

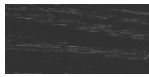


metal
aluminium
1 Colors

seat/back



wood
blanched oak
1 Colors



wood
black open pore
1 Colors



fabric
Hallingdal 65 -
Grade C
58 Colors



fabric
Canvas 2 - Grade C
45 Colors



fabric
Steelcut Trio 3 -
Grade D
54 Colors



fabric
Remix 3 - Grade C
72 Colors



fabric
Fiord 2 - Grade C
39 Colors



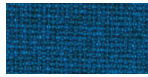
fabric
Divina MD - Grade D
27 Colors



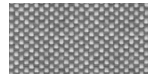
fabric
Divina Melange 3 -
Grade D
38 Colors



fabric
Tonica 2 - Grade C
39 Colors



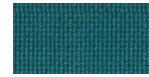
fabric
Medley - Grade A
37 Colors



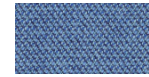
fabric
Maya - Grade A
43 Colors



fabric
Jet - Grade A
66 Colors



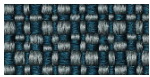
fabric
Lapalma Smart -
Grade C
18 Colors



fabric
Capture - Grade B
43 Colors



fabric
Crisp - Grade B
40 Colors



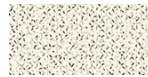
fabric
Iris - Grade B
24 Colors



fabric
Steelcut 3 - Grade D
40 Colors



ecoleather
Valencia - Grade B
66 Colors



fabric
Grain - Grade. B
50 Colors



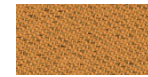
fabric
Re-wool - Grade C
21 Colors



fabric
Main Line Flax -
Grade. B
57 Colors



fabric
Blazer - Grade. C
86 Colors



fabric
Chili - Grade. A
47 Colors



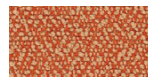
fabric
Umber - Grade. B
36 Colors



fabric
Nobel - Grade. C
30 Colors



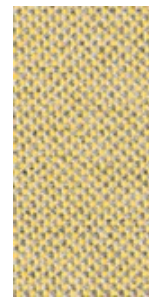
fabric
Naveli - Grade. C
24 Colors



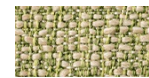
fabric
Fiocco - Grade. B
32 Colors



fabric
Atrium - Grade. C
16 Colors



fabric
Panama - Grade. A
48 Colors



fabric
Sorrento - Grade. B
22 Colors

consult the portfolio for the range of colors, fabrics, eco-leather, soft-leather.

use and maintenance instructions

Clean all parts in wood, leather, fabric and metal with a damp cloth or a diluted neutral cleaner. Do not use cleaners with alcohol, bleach, solvent or abrasive products. Any liquid spilt on the product must be wiped up immediately. When lifting or moving the product, hold it on the structure and not under the seat. The product should not be subjected to unbalanced weights, as it is designed for a proper rest on the foothold (on four legs or on the base). Our company relieves from any responsibility in case of damage caused to fragile floors. Avoid any improper use of the product: do not step on the product, on the footrest or on the armrests. Avoid any movements that could compromise the proper functionality of the product or the safety of the users. Wood and leather, being natural materials, could be easily damaged. Small impurities or imperfections are within quality standard range. Do not expose the product to weather conditions or atmospheric agents, nor to heat sources over 40°C. Also products for outdoor use could be afflicted by atmospheric agents. The product could undergo possible exterior changes due to particular exposure to heat, humidity and saltiness. An appropriate and frequent maintenance and cleaning of the product enhances its durability. The product could change colour and shade, if exposed to direct sunlight. Maintenance has to be carried out by experienced staff. Dispose of the package only after assembling the product, in order to avoid the loss of ironmongery and components. Once the product has been dismantled, the product itself or its components must be given to the public garbage disposal system, according to the legislation in force.